

Scenario Manager

- The scenario manager is a tool that allows non-expert stakeholders to try “what if” alternatives under controlled circumstances

Scenario Manager Process

Baseline Model Developer

1. Loads existing model
2. Selects slots for scenarios
 - Specifies Min/Max
3. Adds baseline comments
4. Creates snapshots of important outputs
5. Saves specifically as "baseline model"
6. Distributes baseline model

Scenario User

1. Loads baseline model
2. Creates/loads scenario
3. Edits scenario slot values
 - Scales values
 - Checks Min/Max
4. Changes active scenario
5. Runs model
6. Saves scenario

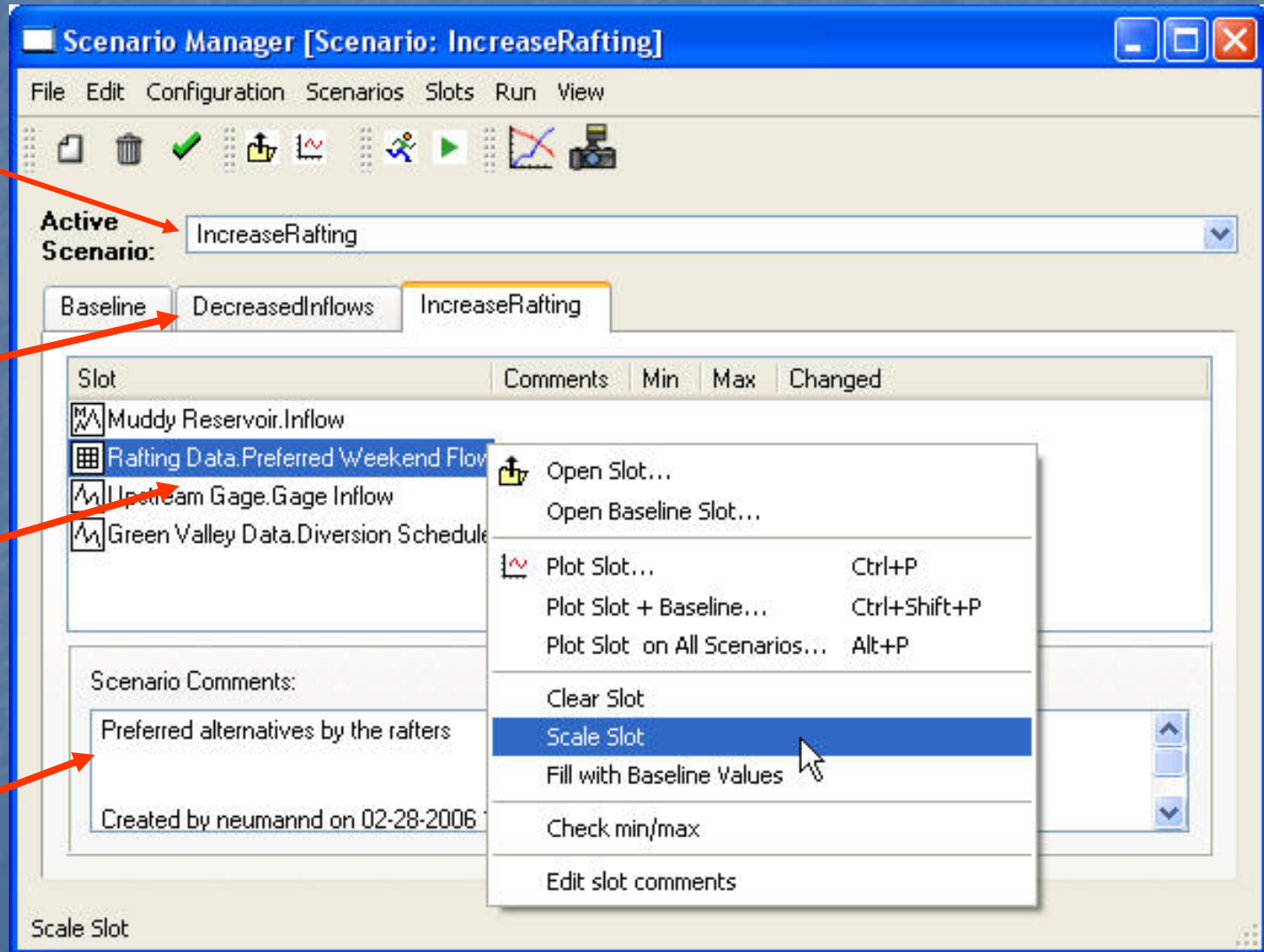
Scenario Manager

Active scenario

Opened Scenarios

Scenario Slots

Scenario Comment



Scenario Manager Features

- “Data alternatives” not policy alternatives
- Data in Scenarios can be:
 - scaled by a multiplication factor
 - reverted to baseline values
- User can easily plot scenario and baseline data
- User can enter comments for the baseline model, scenarios, or scenario slots
- User can plot, export, or take snapshots of scenario results
- Scenario results can only be saved as non-baseline models